

ISA Newsletter

Spring 2014

Contents:

Welcome	1
News from Shakespeare Associations	2
World Shakespeare Congress 2016	4
ISA Member News	6
Birthday Diary	8
The ISA office	10

The International Shakespeare Association



Welcome Message from the Chair

ISA members will find in this newsletter more information about the ambitious plans for the Association's 2016 World Congress, an event that will mark (and continue) four hundred years of remembering and re-inventing Shakespeare's legacy.

We are pleased to be able formally to announce the Congress's theme, "Creating and Re-creating Shakespeare"—a topic that calls upon participants to explore not just Shakespeare's own creative achievement but the myriad ways (performance, scholarship, criticism, adaptation, editorial work...) in which, in the years since his death in 1616, he has been *re-created*—practices that have made Shakespeare, in the words of one of the commendatory poems of the First Folio, "fresh to all ages".

One of the unique aspects of this 10th World Shakespeare Congress is that it will be held in the two locations so vital to the poet's

life and work: Stratford-upon-Avon and London. The Congress will begin on 31 July in Stratford; on 4 August delegates will travel by coach to London; and the Congress will close there on 6 August. The Congress organizers have brought together the firepower of some of the leading Shakespeare organizations in Britain today: the Royal Shakespeare Company; Shakespeare's Globe; the Shakespeare Birthplace Trust; the Shakespeare Institute at the University of Birmingham; and the London Shakespeare Centre, King's College London. The English-Speaking Union will lend its support, and the Congress's online presence will be handled by Misfit inc., the digital company behind such dynamic and innovative web projects as *Blogging Shakespeare* and *60 Minutes with Shakespeare*. The King Edward VI Grammar School, where Shakespeare was educated, and the church in which he was buried, Holy Trinity at Stratford, are official part-

ners of the Congress. Finally, as readers will discover in these pages, Congress delegates will have the opportunity to take full advantage of "Shakespeare400", a rich programme of performances, exhibitions, and other events convened by King's College in conjunction with Shakespeare's Globe, the National Theatre, the British Library, the London Symphony Orchestra, and other leading cultural institutions.

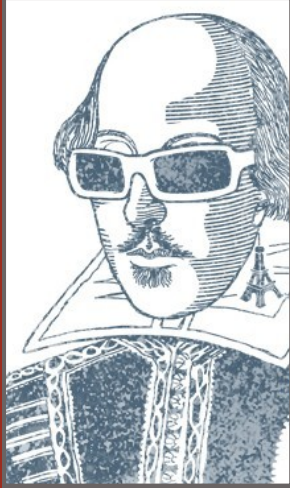
In summer 2016 ISA Congress delegates, their families, and friends will come to Stratford and London from all corners of the world to explore and celebrate Shakespeare's own creativity, as well as 400 years of what we might think of as "Shakespeare-making" from around the globe. See you there!

Peter Holbrook
President,
ISA



News From Around the World

Shakespeare 450 (Paris)



A week-long conference to celebrate the 450th anniversary of Shakespeare's birth

Over 350 participants from across the world will be presenting papers in 31 panels, 21 seminars, 8 plenary lectures, 6 workshops and 2 roundtables. Alongside this academic program, the conference will also feature several performances and special exhibitions of interest to Shakespeare-lovers worldwide:

- screenings of *Hamlet* (Svend Gade, 1921) with an original score by Robin Harris (world premiere); *Les Enfants du Paradis* (Marcel Carné, 1945) in the historic, neo-Ægyptian-themed Louxor film-house; and a pre-screening of the new, digitally-remastered *Othello* (Orson Welles, 1952)
- performances of *Macbeth* directed by Ariane

Mnouchkine at the Théâtre du Soleil; Vincenzo Bellini's *I Capuleti e i Montecchi* directed by Bruno Campanella at the Opéra Bastille; Shakespeare's *Othello* directed by Léonie Simaga at the Théâtre du Vieux-Colombier, founded in 1913 by Jacques Copeau

- backstage tour of the Comédie Française, and visit to the exhibition on the Great War at the Bibliothèque nationale de France
- special Shakespeare-inspired visits of the Musée Victor Hugo, the Musée Delacroix, and the royal effigies of Saint-Denis, with Renaissance songs and texts performed in the apse of the Basilica.

The opening day will take place at the historic Théâtre de l'Odéon, where Shakespeare's works were performed to great acclaim in France in the 1820s, giving rise to the French love affair with Shakespeare. Subsequent events will take place in several venues in the *Quartier Latin*.

Organized by the Société Française Shakespeare with the support of French and foreign institutional, academic and cultural sponsors, "Shakespeare 450" launches two years of Shakespearean celebrations in the run-up to the 400th anniversary of the poet's death in 2016.

Dominique Goy-Blanquet, Yan Brailowsky, Diana Schütz

Paris
April 21-27, 2014

For more information visit:

www.shakespeareanniversary.org/shake450/

Prague 2011 Proceedings

Renaissance Shakespeare: Shakespeare Renaissances

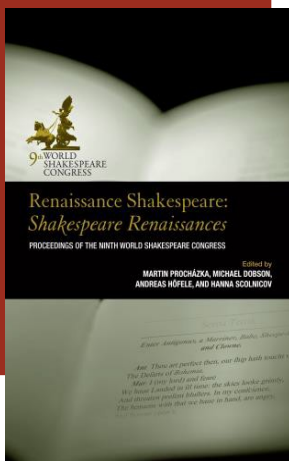
Selected contributions to the Ninth World Shakespeare Congress, which took place in July 2011 in Prague, are now available in hardback and as an e-book. The volume, edited by Martin Procházka, Michael Dobson, Andreas Höfele, and Hanna Scolnicov is published by Uni-

versity of Delaware Press in co-operation with Rowman & Littlefield.

If you would like to order your copy, ISA members are entitled to a discount of 30% off the hardback, using the promotional code UP30AUTH14 at checkout.

You can order at www.rowmanlittlefield.com or use the order form we will distribute in a separate ISA mailing in the near future.

Martin Procházka



News From Around the World

Fundación Shakespeare Argentina: Three Years On

Fundación Shakespeare Argentina (FSA) is a non-profit cultural organization dedicated to increasing and deepening the knowledge, enjoyment, and appreciation of the life and works of William Shakespeare in Argentina. FSA has organized several activities and events to broaden the appreciation for Shakespeare in Argentina and encourage international recognition of Argentinian interpretations of Shakespeare since the association was formed in May 2011.

In 2014 FSA will celebrate Shakespeare 450 with several homages together with different Argentinian institutions and in collaboration with important international organizations.

A portrait of Shakespeare by the admired Argentine surrealist painter Juan Carlos Liberti [painting opposite] will be part of the new visitor Exhibition at The Shakespeare Birthplace Trust in Stratford-upon-Avon in April 2014.

Mercedes de la Torre



See more:

<http://www.shakespeareargentina.org/FSA/news.html>

http://issuu.com/shakespeareargentina/docs/gacetilla_de_las_actividades_de_la_e=4068398/6637399

Professor R.A. Foakes (1923-2013)

Professor Reg Foakes, who died at his home in Stratford-upon-Avon just before Christmas, was a wise, liberal-minded, influential and much-loved Shakespeare scholar and teacher.

His career spanned over sixty years at the universities of Birmingham, Durham, Yale, Toronto, Kent and Los Angeles. He was born and grew up in West Bromwich. His degree at Birmingham was interrupted by the Second World War while he served in the Royal Navy and installed radar in night fighters. After his degree he undertook post-graduate study at Mason Croft with the renowned Pro-



Photo: Christa Jansohn

fessor Allardyce Nicoll. In 1951 Reg, along with John Russell Brown and Ernst Honigmann, was made an Assistant Lecturer in the then newly-founded Shakespeare Institute. All three went on to become eminent Shakespeareans and remained good friends for life.

As a scholar he is cherished for his edition of Philip Henslowe's *Diary* and his excellent editions of *Troilus and Cressida*, *Henry VIII*, and *The Comedy of Errors*. In a blog post his friend Sylvia Morris remembers Reg working on his landmark edition of *King Lear* at The Shakespeare Centre Library: 'although he was a highly-respected academic his unassuming personality and willingness to discuss his work made him popular.'

Paul Edmondson

For a fuller version of this obituary, with comments, please click here:

<http://bloggingshakespeare.com/honouring-reg-foakes#sthash.G3qXeAzM.dpuf>

World Shakespeare Congress 2016

Stratford-upon-Avon

The International Shakespeare Association is pleased to announce the World Shakespeare Congress 2016 in the special Shakespeare 400th anniversary year: *Creating and Re-creating Shakespeare*. Registration will be opening in the not too distant future and we promise to keep you posted. And to welcome you with open arms.



Appropriately, WSC 2016 will take place in Stratford-upon-Avon for the first half of the week and London for the second, linking the most important locations in Shakespeare's life. It will also amalgamate the biennial International Shakespeare Conference, usually held at The Shakespeare Institute.

The WSC 2016 hosts – The Royal Shakespeare

Company, Shakespeare's Globe, The Shakespeare Birthplace Trust, The Shakespeare Institute, University of Birmingham, and King's College London – look forward to welcoming delegates, their partners, family, friends and students from around the world.

In Stratford-upon-Avon, delegates will have privileged access to the RSC's spaces and artists (with an exciting repertoire of plays), King Edward VI School, The Shakespeare Institute, The Shakespeare Centre (its Library and Archive) and the five Shakespeare houses

cared for by The Shakespeare Birthplace Trust. Following on from the archaeological dig in recent years, New Place itself will be presented entirely afresh for 2016, giving a better sense of what Shakespeare's house was like and its importance to him: a grand family home and the place where he died four hundred years ago. The natural beauty of the Cotswolds and all that the

lovely region of Warwickshire has to offer are within easy reach.

There will be a special celebratory atmosphere in Stratford-upon-Avon in what promises to be a memorable summer. The Congress plenaries will take place in The Royal Shakespeare Theatre. Reflecting the conference theme these sessions will include internationally renowned creative writers, theatre practitioners, artists and academics. On the Sunday evening the ISA welcomes you to a grand reception in The Royal Shakespeare Theatre and a very special opening ceremony. On Wednesday night after the theatre performances all delegates will have the opportunity to take part in a procession to Shakespeare's grave by candlelight in Holy Trinity Church. Coach transfer is all fully worked out to transport delegates to appropriate places in London.

Paul Edmondson

July 31— August 6

London

For the second half of the week, the 2016 Congress will move from Shakespeare's birthplace to his workplace, London, where King's College London and Shakespeare's Globe look forward to welcoming all delegates to a substantial programme of events and to all the cultural opportunities the capital offers. The academic programme will be hosted by King's and Shakespeare's Globe, and delegates will be able to take advantage of the Globe's summer programme - performances in the Globe Theatre, access to the superb new candlelit indoor Sam Wanamaker Playhouse, and a range of special events coordinated by Globe Education. And the plenaries will take place in 'the great Globe itself'.

Delegates will also be able to take advantage of the performances, exhibi-

tions and events that will be taking place as part of the 'Shakespeare400' season, organised by King's in conjunction with the Globe, the National Theatre, the British Library, the London Symphony Orchestra, and many more of London's leading cultural and creative organisations. As we know more about the programme for the season we will inform delegates, but we can tell you that the Thursday evening London opening reception will take place at the British Library, to be followed by a private view of the major Shakespeare exhibition the Library is planning for that summer. There will also be further opportunities for delegates to attend the season's events in the week following the Congress.

In addition to these opportunities, London is of

course London, with its unmatched array of museums, art galleries, theatres, concert venues, restaurants and pubs. As delegates make their way between the workshop and seminar venues at the Globe to those at King's, they will pass Tate Modern and either cross the 'wobbly' bridge to St Paul's Cathedral and walk along Fleet Street, past the Royal Courts of Justice, to the Strand, or stay on the Bankside and pass the National Theatre, the Royal Festival Hall and the British Film Institute before crossing Waterloo Bridge to King's, which is located in and alongside Somerset House. Either way, they will be at the heart of Shakespeare's London.

Gordon McMullan



WSC 2016 Hosts

Royal Shakespeare Company

Shakespeare's Globe

Shakespeare Birthplace Trust

Shakespeare Institute, University of Birmingham

London Shakespeare Centre, King's College London

News From ISA Members

Nagoya University , Japan:

Lecture "Henry VIII, Catherine of Aragon, and Anne Boleyn"
by Yoko Odawara on April 24.

Yoko Odawara

[odawara@lets.chukyo-u.ac.jp]

Sofia University , Bulgaria: Shakespeare 450

The celebrations of Shakespeare's anniversary focus on *Hamlet* and are planned to cover the entire year with a series of monthly events, including talks by academics from home and abroad under the heading 'What Is *Hamlet* to Us?', a round table on the Bulgarian reception of the play and a theatre laboratory with professional directors and actors, as well as performances of the Bard's plays by the University's Alma Alter Theatre.

<http://wordpress.eas-bg.org/shakespeare450/>

Alexander Shurbanov
[a.shurbanov@gmail.com]

Shakespeare on the Road, USA

Shakespeare on the Road will celebrate Shakespeare's birthday by visiting 14 festivals as part of a 60 day road trip across North America. The project will build up a picture of how Shakespeare is being performed and celebrated, researching festival history and performance on the spot. The aim of the project is to tell a story of reverse pilgrimage and symbolically to take Shakespeare's Birthplace to America.

www.shakespeareontheroad.com

Susan Brock, Paul Edmondson,
Paul Prescott

Belgrade, Serbia

- new translation of the Sonnets at the National Theatre
- lecture series on Shakespeare's oeuvre, authorship, contemporaries and interpretation at the Kolarac Endowment
- hosting the Globe-to-Globe *Hamlet* on June 19

Natasha Sofranac

[natashapixie@yahoo.co.uk]

Singing Shakespeare

is a three-year global project to inspire choirs from all over the world to take part in the 450th birthday celebrations and the 400th anniversary of Shakespeare's death in 2016. Award winning composer [Gary Carpenter](#) will produce four volumes of compositions which put Shakespeare's words to music.

The premiers of the first volume of three settings will take place in Stratford-upon-Avon during the town's Shakespeare Birthday Celebrations between 24 and 27 April 2014. Premieres of the remaining three volumes will take place in Edinburgh, Cardiff and Belfast between April 2014 and 2016.

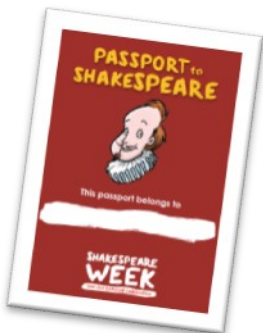
Marion Morgan

SHAKESPEARE WEEK

Join our national celebration

Shakespeare Week will offer children the chance to take part in creative and cultural learning experiences in schools and outside the classroom.

This website brings together free resources for teachers and promotes events and activities in cultural and heritage organisations nationwide.



Every child whose school participates in Shakespeare Week will receive the Passport to Shakespeare encouraging them to continue learning at school, beyond the classroom and with their families.

www.shakespeareweek.org.uk

Shakespeare Week is coordinated by the Shakespeare Birthplace Trust

News From ISA Members

Centro de Estudos Shakespeareanos, Brazil

- "Shakespeare's Day", a performance of extracts from Shakespeare's work that takes place in open air sites usually linked to small restaurants or bookstores with cafes to help us achieve something of the atmosphere of Shakespeare's time.
- *O País Descoberto: Shakespeare e o Brasil (The Discovered Country: Shakespeare and Brasil)*, written by members of the Centre.
- "Shakespeare Forum" in 4 different cities: Rio da Janeiro, São Paulo, Belo Horizonte and Brasília, all organized by the "People's Palace Project".

Aimara Resende

[aimara@terra.com.br]

Elizabeth City State University, NC

Elizabeth City State will sponsor a student publication of poems that parody Shakespeare's many works and distribute it across the campus in honor of Shakespeare's birthday.

<http://www.ecsu.edu/academics/artshumanities/lc/poem.cfm>

Chantelle MacPhee

[englitgirl@yahoo.com]

Czech Radio 3 Vltava

is preparing a 120-minute programme on the history of Shakespeare in the Czech lands to mark the 450th anniversary, based on my book *Czech Attempts at Shakespeare* (České pokusy o Shakespeara, 2012).

The programme is to be broadcast on 28 April 2014.

Pavel Drabek

[P.Drabek@hull.ac.uk]

Bungakuza Theatre, Tokyo

- Symposium on April 23 at New Moriya Building
- Readings of the plays and Sonnets throughout the year
- Performance of *King Lear* and symposium in January 2015

Yoko Odawara

[odawara@lets.chukyo-u.ac.jp]

Shakespeare Lives Here!

Celebrate Shakespeare's 450th Birthday Year with The Shakespeare Birthplace Trust and share your Birthday celebrations:

<http://www.shakespeareliveshere.co.uk/>

The Shakespeare Birthplace Trust and the University of Warwick present

Reviewing Shakespeare - the first website devoted to scholarly reviews of worldwide Shakespearian performance (theatre, film, TV) for a general audience. The expert reviews of global Shakespearian performance are produced and commissioned by an extraordinary team of international Associate Editors. Following in the footsteps of the 2012 [Year of Shakespeare](#) project, the site publishes reviews, articles about performance, comments, audiobooks and videos. The site is fully searchable and, as the archive grows, will offer an invaluable (and free) resource to theatregoers, practitioners, historians and general Shakespeare enthusiasts.

www.reviewingshakespeare.com

Shakespeare Birthday Diary

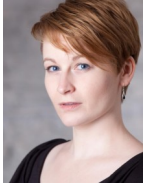
This spring we invited ISA members to share their Shakespeare anniversary plans. The following diary reflects the status quo at the time of mailing.

April 2	Book presentation	A literary evening presenting books by the world's most eminent scholars. Topics include the reception of Shakespeare in Serbia and various cultural, translation and psychoanalytic issues.	University of Belgrade, Serbia
April 3-5	Conference	Shakespeare and the Problem of Biography The Folger Institute Center for Shakespeare Studies will undertake a rigorous investigation of the multiple—and conflicted—roles biography plays in the reception of Shakespeare today. http://www.folger.edu/template.cfm?cid=4653	Folger Shakespeare Library, United States
April 7-21	Exhibition	Lodz Shakespeare: the exhibition to commemorate the 450th anniversary of the Bard's birth reflects Shakespeare's long-term presence in the cultural, educational and intellectual life of the city from theatrical productions, to translations, publications and popular artefacts. The opening of the exhibition will be preceded by a lecture entitled SHAKESPEARE IN ŁÓDŹ CULTURE and a workshop session Shakespeare and Popular Culture: Movies, Advertisements and Computer Games , organized as part of the 15th Science, Technology and Art Festival in Łódź. http://shakespearecentre.uni.lodz.pl/en/450th-anniversary-of-william-shakespeares-birth/	International Shakespeare Studies Centre at the University of Lodz, Poland
April 18	Symposium	The 450th Anniversary Symposium will focus on past and present adaptations of Shakespeare employed by Japanese traditional theatres. http://www.britishcouncil.jp/en	British Council Tokyo, Japan
April 19	Festival	Shakespeare Festival at Gakushuin University The programme consists of two parts. The first is the Director's Talk by Masahiro Yasuda, Director of the Theatrical Company of Yamanote Jijosha, while the second is a special lecture given by Emi Hamana, Professor at Tsukuba University, entitled 'Ever-fascinating Shakespeare -- with Special Emphasis on Shakespeare's Translingual Imagination and Practice'.	The Shakespeare Society of Japan in cooperation with the English Literary Society of Japan, Japan
April 24	Gala dinner	Shakespeare 450 Charity Gala Proceeds toward Ottawa Community Coalition for Literacy http://artsites.uottawa.ca/shakespeare-celebrations/en/shakespeares-birthday/	Graduate Students Association, Department of English, Canada
April 24-27	Festival	Celebrating Shakespeare: Four days of theatre, concerts, talks, workshops, discussions, readings, exhibitions, movies and a huge party. http://shakespeare-gesellschaft.de/en/conferences/upcoming/weimar-fruehjahr-2014.html	Deutsche Shakespeare-Gesellschaft, Germany

Shakespeare Birthday Diary

Talks and conference	<p>Shakespeare Day: Various speakers will talk about different aspects of Shakespeare's works; for example, Animated Shakespeare, Translated Shakespeare, Danced Shakespeare.</p> <p>Shakesyear Conference: Remembering and celebrating Shakespeare, the dear bard of Avon, both as a literary genius and as a theatrical genius.</p> <p>Contact: Necla Cikigil [neclac@metu.edu.tr] and Neslihan Ekmekçioğlu [mayneslie@turk.net]</p>	English Literature Department, Hacettepe University, Turkey	April 29
Symposium	<p>Shakespeare among the Germans</p> <p>The talks will focus on the German reception of Shakespeare's work, on his influence on literature and language as well as on music.</p> <p>http://www.shakespearealbum.de/</p>	Akademie der Wissenschaften Mainz, Germany	May 15-17
Conference	<p>The Asian Shakespeare Association (ASA)'s inaugural conference "Shakespearean Journeys" features speakers and theatre artists from 24 countries. The program includes keynote speeches, plenary and parallel paper sessions, seminars, workshops, live performances, and film screenings.</p> <p>Visit http://AsianShakespeare.org for more information.</p>	Taiwan Shakespeare Association, National Taiwan University, National Taiwan Normal University	May 15-18
Conference	<p>The Shakespeare Festival of Gyula: Is Shakespeare still our contemporary?</p> <p>Invited keynote speakers are Maria Shevtsova (London), Holger Klein (Salzburg), Jerzy Limon (Gdansk).</p> <p>Register till April 1 at geszonyi@freemail.hu</p>	The Hungarian Society for the Study of English, the Hungarian Shakespeare Committee and University of Szeged, Hungary	July 11-12
Symposium	<p>Adapting, Performing and Reviewing Shakespearean Comedy in a European Context</p> <p>This two-day symposium brings together practitioners, reviewers and academics to generate a focused debate on the transnational and regional aspects of humour and its manifestation in Shakespeare's texts and adaptations.</p> <p>For further information contact shakespeare.comedy.2014@gmail.com or go to http://www.modernlanguages.sas.ac.uk</p>	Institute of Modern Languages Research (IMLR), London	July 12-13

The ISA Office: Message from Nick Walton



Lisa Peter from Tübingen University has now joined our team as ISA Administrative Assistant. Lisa joined the Shakespeare Birthplace Trust as Lecturer in Shakespeare Studies (International) in January, and will serve as a point of contact for all ISA members in the run-up to the 2016 World Shakespeare Congress.

I know that Lisa has already had contact with some of our members to help create the diary of 2014 events included in this newsletter, and she is keen to hear from more members with news for future mailings. Just drop her a line with what is going on in your area Shakespeare-wise.



Gennet Rich remains your contact for membership payments and questions, and I will continue my work for the ISA as Executive Secretary and Treasurer.

The ISA's email address continues to be isa@shakespeare.org.uk

Our membership subscriptions/renewal form can be found at

<http://www.shakespeare.org.uk/explore-shakespeare/students-and-enthusiasts/international-shakespeare-association.html>



You will be hearing from us again in April/May when the 'Call For Papers' for WSC 2016 will be released.

We look forward to hearing from you.

Nick Walton, ISA Executive Secretary and Treasurer

*The International
Shakespeare Association*



The International Shakespeare Association

Dr. Nick Walton, Lisa Peter
The International Shakespeare Association
The Shakespeare Centre
Henley Street,
Stratford-upon-Avon
Warwickshire, CV37 6QW
isa@shakespeare.org.uk